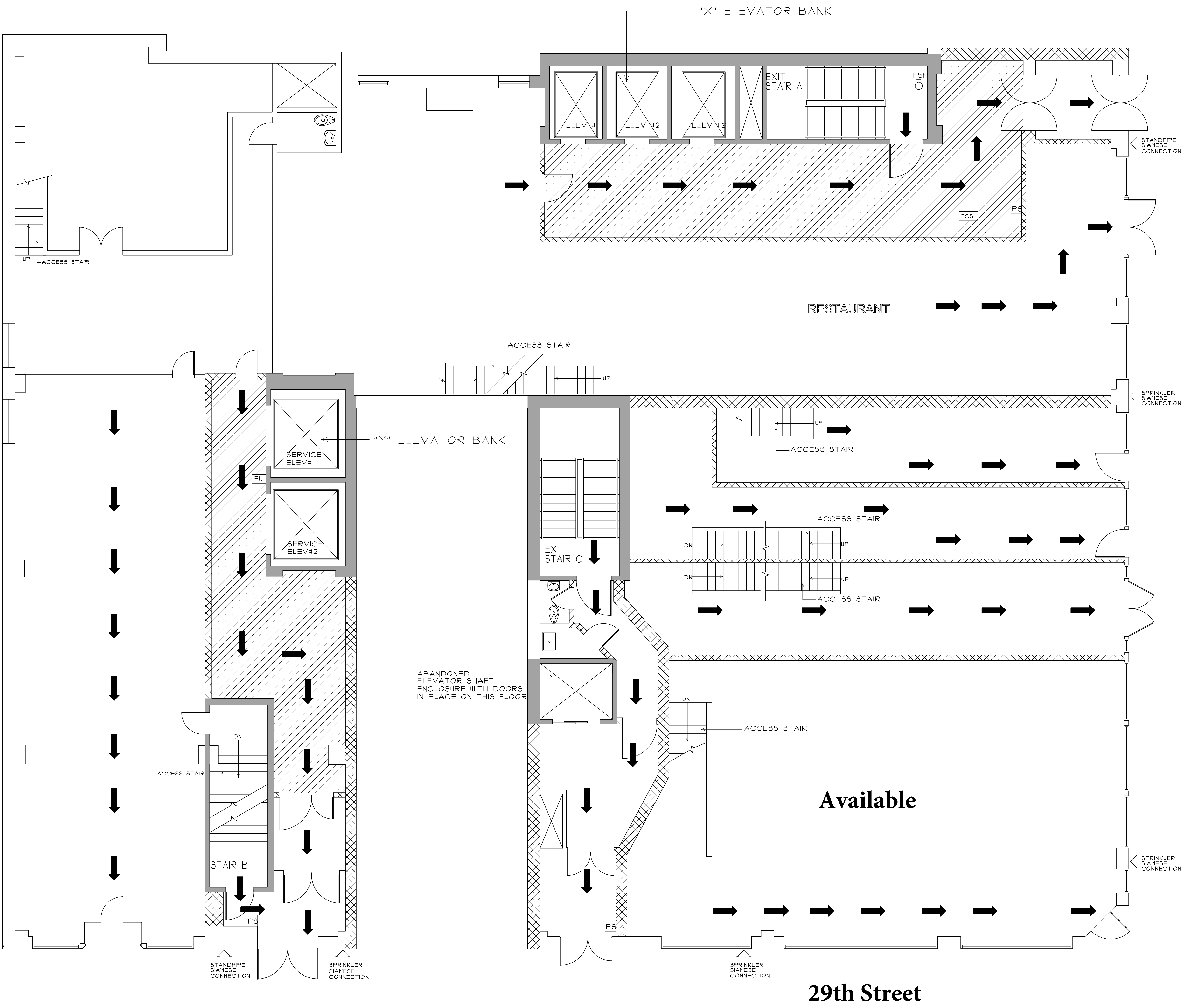


U:\350 Thru\COMPENSIVE RISE 1 EAST\1ST FLOOR PLAN.rvt



LEGEND

- PULL STATION PS
 - FIRE WARDEN FW
 - SIAMESE CONNECTION V
 - FIRE STANDPIPE FSP
 - IN-BUILDING RELOCATION AREA
 - FIRE COMMAND STATION FCS
 - EXIT ROUTE ➔
 - WALL MOUNTED EXIT SIGN WITH ARROWS POINTING TO DIRECTION OF EXIT ➔
 - SPRINKLER CONTROL VALVE X
- PARTITION TYPES**
- 2 HOUR FIRE RATING
 - 1 HOUR FIRE RATING
- NOTE: ALL PARTITION FIRE RATING ARE ASSUMED

7TH AVENUE

29th Street

NO.	DATE
PROJECT	
GRASSO-MENZIUSO ARCHITECTS A.I.A. 350 SEVENTH AVENUE, NY, 10001 TEL: (212) 779-0257 FAX: (212) 779-9648	
STRUCTURAL ENGINEER:	
MECHANICAL ENGINEER:	
TITLE	PROJECT NO. 8037
1ST FLOOR	DATE: 1/28/09
LOCATION	SCALE: 1/4"=1'-0"
350 SEVENTH AVENUE NEW YORK, NEW YORK	DWG BY:
	FL-1
<small>ALL RIGHTS RESERVED. ALL DRAWINGS, SPECIFICATIONS AND COPIES THEREOF PROVIDED BY THE ARCHITECT ARE AND SHALL REMAIN THEIR PROPERTY. THEY ARE NOT TO BE USED ON THIS OR ANY OTHER PROJECT UNLESS WRITTEN PERMISSION IS GIVEN BY G. M. ARCHITECTS.</small>	

